

CYLINDER CONTENTS TEST GAUGES

Protect yourself against gas shortages, check the cylinder contents.

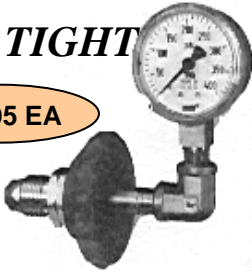
This eliminates the uneasy question of "is it full or not?"

FOR USAGE 3000 psi AND UNDER (ACETYLENE 350 psi)

HAND TIGHT

\$59.95 EA

GA-2-510
Acetylene



Part No.	CGA FITTING
GA-2-346	AIR
GA-2-510	P.O.L. ACET.
GA-2-540	OXYGEN
GA-2-580	NITROGEN
GA-2-590	IND. AIR

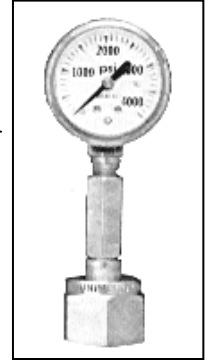


WRENCH TIGHT

Part No.	UNIT PRICE	Description
TGCB	\$28.50 EA	" B " Acetylene CGA-520
TGCMC	\$28.50 EA	" MC " Acetylene CGA-200
TGCN	\$34.22 EA	Nitrogen CGA-580
TGCO	\$34.22 EA	Oxygen CGA-540

Nitrogen

(ALSO FITS ARGON, HELIUM AND INERT MIXES)



Oxygen

SOME GASES, SUCH AS CARBON DIOXIDE AND REFRIGERANTS, ARE FILLED BY WEIGHT AND NOT PRESSURE, SO A PRESSURE GAUGE WOULD NOT HELP IN DETERMINING CYLINDER CONTENTS.



ESAB R-76 Series Heavy-Duty 2-1/2" Color Coded Gauges

CO2 - Single Stage
CGA -320 Inlet
5/8-18 RH Female "B" Outlet
0-150 PSI Delivery Pressure

#19629
\$205.00 Ea.



ESAB R-72 Series Medium-Duty 2-1/2" Color Coded Gauges

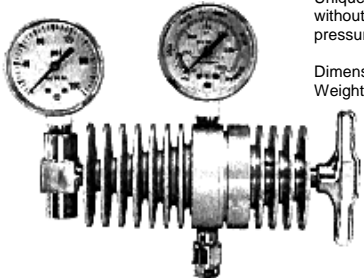
Nitrogen - Single Stage
CGA -580 Inlet
1/4" M Flare Outlet
0-125 PSI Delivery Pressure

#0558005416
\$97.95 Ea.

ESAB manufactures a complete line of regulators that are unsurpassed in their field for safety and capacity, with patented built-in explosion protection. All ESAB regulators are built from top quality materials and are designed to provide safe, efficient gas control in applications ranging from light-duty maintenance and repair to heavy-duty production. ESAB's Gas Apparatus Lifetime Warranty applies to Oxweld®, Purox® and Prest-O-Lite® regulators and covers manufacturer defect in materials and workmanship as well as normal wear and tear.

HIGH VOLUME CARBON DIOXIDE REGULATORS/HEATERS

VICTOR®



SR regulator is specifically designed for use with standard (non-siphoned) carbon dioxide cylinders. Unique design permits flow rates up to 200 SCFH without freeze-up or noticeable change in pressure or flow.

Dimensions: 8-3/8"W x 7-1/4"H x 2-1/2"D
Weight: 2 lbs. 15 oz.



Part No. SR311-320

SPECIFICATIONS

PERFORMANCE

MATERIALS

DESIGN/CONSTRUCTION

- Machined body and housing cap
- 2" Gauges
- Stem type seat mechanism
- 1-3/4" Diaphragm
- Self reseating relief valve (Not designed to protect downstream apparatus)
- Sintered Inlet filter

Maximum Inlet..... 1500 PSIG
Maximum flow 200 SCFH

NOTE: Regulators will deliver at least the stated upper range at no flow and in some cases may exceed the stated upper range.

Body..... Aluminum
Diaphragm..... Fabric Reinforced Neoprene
Housing cap Aluminum
Inlet filter..... Bronze

\$527.15 EA

ORDERING INFORMATION

GAS SERVICE	PART NUMBER	DELIVERY RANGE	SPECIFY CGA INLET CONNECTION
CO ₂	SR311-320	10-150 PSIG	320
OUTLET CONNECTION 5/8 -18 (F) R. H.			



\$326.50 EA

Electrically Heated Regulator/Flowmeter

Part No. 198C

PRESET at 50 PSI OUTPUT
5/8"-18 RH Female THREAD OUTLET

CAUTION: Use this regulator only with non-siphoned standard CO₂ cylinders

- Built-in thermostatically controlled electric heater keeps the CO₂ warm, allowing for a continuous duty cycle without freezing. 110VAC/ 190W heater is standard.

Gas Service	Part Number	Maximum Delivery Flow (SCFH)	Inlet	
			Connection	Gauge
Carbon Dioxide	198C	0-60	CGA 320	2" X 4000 PSI

Part No. CO2H

CO2 Heater
120 Volt AC/60hz.

\$142.50 EA

The most **ECONOMICAL** Thermostatically controlled CO₂ Heater, designed to prevent CO₂ regulator Freeze-Up. Extends life of regulator/flowmeter and prevents porosity in welds from loss of shield gas in frozen regulator. Easily installed between CO₂ cylinder valve and flowmeter or regulator.

CAUTION: AVOID BURNS! EXTERIOR OF HEATER WILL BECOME HOT WHILE IN USE. DO NOT TOUCH WITHOUT ADEQUATE SAFETY PROTECTION

The electric carbon dioxide heater is intended for use on 115 volt, 60 hertz, single phase alternating current ONLY. It is not insulated for outdoor use and, therefore, must be protected from moisture and weather or climatic conditions which could cause electrical equipment to become a hazard. Use only with a 3-wire, grounded, electrical extension cord and socket.

Withdrawal rates of 20 scfh or more can result in the withdrawal of liquid carbon dioxide from a cylinder or reliquefaction of the gas, prior to its entry into a carbon dioxide flowmeter/regulator combination unit.

The totally-enclosed heating element combined with a thermostatic control prevents overheating and possible damage to the regulator.

Use the CO₂ heater between the cylinder valve and the regulator. Fiber washers must be used on both CGA 320 connections. Use on carbon dioxide gas withdrawal cylinder only. DO NOT use on liquid carbon dioxide withdrawal cylinders.

Model (Part) Number: CO2H
Material: Aluminum Case & Solid Brass Expansion Chamber
Dimensions: 2" Diameter & Over All Length
Fittings: Solid Brass for CO₂ cylinders, CGA 320

Electrical: 115 Volts, 60 hertz, Single Phase
Power Consumption: 100 Watts
Capacity: 90 scfh

Certificate of Quality