

HOSE REELS



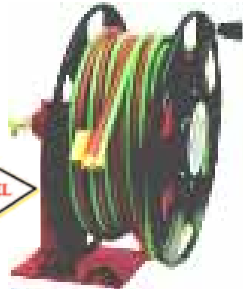
Gas Accessories

TWIN HOSE HAND CRANK Oxygen-Acetylene (or Fuel) - T Grade Seals Maximum Pressure 200psi

Safe-T-Reels are ideal for applications where space, weight, and flexibility are key concerns. With a non-metallic reel and steel stand Safe-T-Reels offer trouble-free manual hose handling of large capacities. Up to 150' of fuel gas hose. Call us for additional information.

Four 1/2" (13mm) diameter mounting holes on 6" x 6" centers Max. Operating Temperature: 150°F

Part No. 1225-04-00
\$525.00 EA



Hose is not included



DESCRIPTION			
Reel, Twin 1/4" Swivels			
Ht.	W.	D.	Wt.
19"	16.125"	18"	*19lbs.
Capacity		Pressure	
150' (1/4" Twin)		200 PSI	

Caution: Compressed air hoses should not be converted to oxygen service. Compressed air hoses are often contaminated with an oil coating, which can react explosively when oxygen is introduced. See the Pneumatic Fittings section of this catalog.



Model #BA36106L Shown

Part No. BA36106L
\$599.00 EA

Capacity: 125 feet
1/4" Hose
O.A. Dims: 17.75"L x
16.625W x 20.625"H
Wt.: *50 lbs.

Part No. BA36112L
\$625.00 EA

Capacity: 250 feet
1/4" Hose
O.A. Dims: 17.75"L x
22.625W x 20.625"H
Wt.: *57 lbs.

TWIN HOSE SPRING RETRACTABLE

All reels shown on this page (Except for #STW3450OLP) do not include hose and can be used on all Oxy-Fuel and Oxy-Acetylene gases. See previous page for proper hose selection.

Hose inlet connections are 1/4" FPT on models: TW54000OLP, TW74000OLP, BA36106L, & BA36112L. Standard male "B" (9/16"-18), welding/cutting hose connections are included on models: STW3450OLP, 1225-04-00, & TW84000OLP



Part No. STW3450OLP
Non-Metallic "S" Series
\$305.00 EA

Capacity: 50 feet (Included)
1/4" Hose
O.A. Dims: 17.75"L x
22.625W x 20.625"H
Wt. w/Hose: 27 lbs.
Note: Unlike other reels on this page, this Reel/Hose combination comes complete with Oxy-Acetylene use (only) Hose.

BA & TW Series REELCRAFT Advantages

- Corrosion-Resistant Finish** – Durable abrasion and corrosion resistant baked-on red powder-coated finish.
- Reinforced Steel Guide Arm** – Reduces bending due to angular pull.
- Long Life Drive Spring** – Declutching arbor virtually eliminates possibility of spring damage due to reverse winding of reel spool.
- Enclosed Drive Spring** – For protection against environment.
- Swivel Body and inlets** – Are both permanently identified with machined grooves on acetylene side to assure proper installation.
- Doubled Sealed Swivel** – Special molded, double "O" rings prevent leakage.
- Adjustable Guide Arm** – Multiple guide arm positions for versatile uses and easier field adjustment.
- Structural Strength Frame** – Welded heavy gauge steel frame includes dramatically flanged edges and stiffening ribs for lighter weight, yet stronger components for ease of handling and installation.
- Temperature/Operating Range:** -20° F (-29°C) to +250° F (+120°C).



Replacement Hose Bumper
#8-HR1004-3 See below

100FT
Part No.
TW84000OLP
\$682.95 EA

25FT
Part No.
TW54000OLP
\$328.95 EA

50FT
Part No.
TW74000OLP
\$386.95 EA

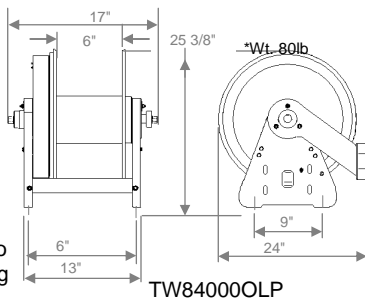
HOSE CAPACITY (Maximum 200 psi)

Part#	I.D.	O.D.	LGTH.
TW54000OLP	1/4"	.530	25'
TW74000OLP	1/4"	.530	50'
TW84000OLP	1/4"	.530	100'

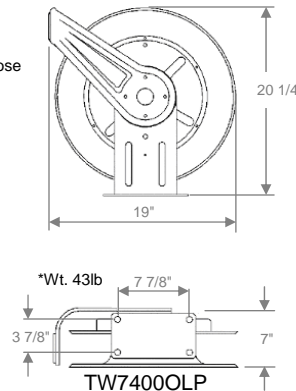
LOW PRESSURE RECOIL HOSE REELS

Reels automatically retrieve and store up to 100 feet of 1/4" I. D. Twin Siamese Welding Hose. Pos-i-Latch mechanism maintains desired hose length outside reel. Heavy duty brackets are field adjustable for floor, wall, ceiling or vehicle installation.

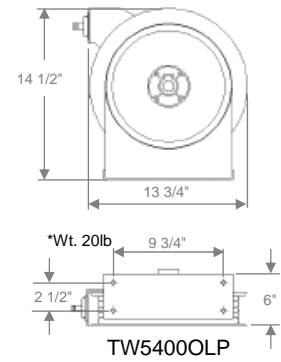
*Weight listed is actual product weight without hose



TW84000OLP

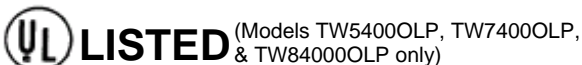


TW74000OLP



TW54000OLP

TW54000OLP & have 5/16" (8mm) dia. mounting holes. BA36106L, BA36112LTW74000OLP and TW84000OLP have 1/2" (12.7mm) mounting holes.



Adjustable hose bumpers are solid molded rubber assuring a long life and nonslip grip. Hose bumpers allow the desired length of hose to be permanently stored outside the reel. Hose bumpers are included with spring retractable reels.

Replacement Hose Bumpers: **Part No. 8-HR1004-3 Price \$11.95 EA**