



FOR PRICE LISTING  
GO TO PAGE 317

# PLASMA CUTTING

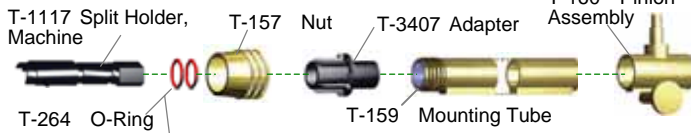
Replacement Parts

Accessories Suitable For

**Thermal Dynamics Corp.®**

Torch Model	Power Supply Model
PCH/M-140	STAK PAK®

**Machine Torch**



**Hand Torch**



With Quick Disconnect

- T-1659 Hand Leads, 25', w/QD
- T-1660 Hand Leads, 50', w/QD
- T-1661 Machine Leads, 25', w/QD
- T-1662 Machine Leads, 50', w/QD

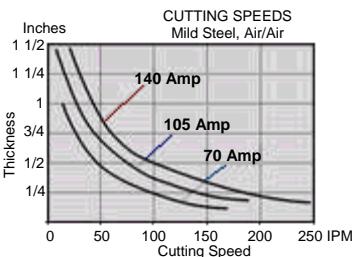
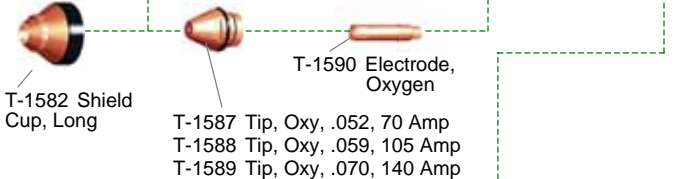
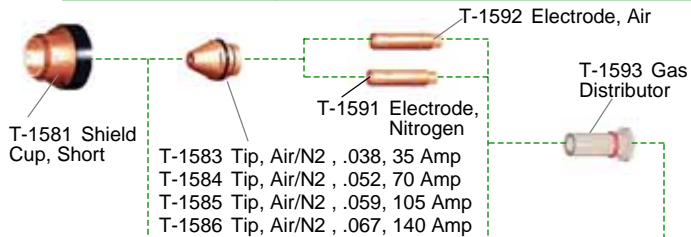
**Item Not Shown**

T-1663 PIP Wire Assy

Suitable For

**Thermal Dynamics Corp.®**

Torch Model	Power Supply Model
PCH/M-145	STAK PAK®



**REQUIREMENTS: Plasma Gases**  
Compressed Air, Oxygen, Nitrogen, Argon/Hydrogen  
Plasma Gas Pressure: 50 psi (3.4 bar)  
Flow Requirements:  
Cutting 22 - 28 scfh (10.4 - 13.2 lpm)  
Gouging 22 - 43 scfh (10.4 - 20.3 lpm)

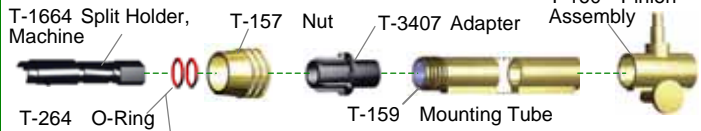
**REQUIREMENTS: Secondary Gases**  
Compressed Air, Nitrogen, Carbon Dioxide  
Secondary Gas Pressure: Cutting or Gouging 50 - 75 psi (3.4 - 5.2 BAR)  
Secondary Gas Flow: Cutting or Gouging 220 scfh (103 lpm)

Accessories Suitable For

**Thermal Dynamics Corp.®**

Torch Model	Power Supply Model
PCH/M-145	STAK PAK®

**Machine Torch**



**Hand Torch**



With Quick Disconnect

- T-1670 Hand Leads, 25', w/QD
- T-1671 Hand Leads, 50', w/QD
- T-1672 Machine Leads, 25', w/QD
- T-1673 Machine Leads, 50', w/QD

Accessories Suitable For

**Thermal Dynamics Corp.®**

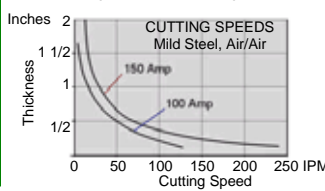
Torch Model	Power Supply Model
PCH/M-150	MERLIN®PAK 15XC



- T-241 Tip, .070 Air 150 Amp
- T-242 Tip, .055 Air 100 Amp
- T-243 Tip, .043 Air 50 Amp
- T-244 Tip, .070 Oxy 150 Amp
- T-245 Tip, .052 Oxy 100 Amp
- T-246 Tip, .043 Oxy 50 Amp
- T-247 Tip, .067 Nit 150 Amp
- T-248 Tip, .052 Nit 100 Amp
- T-249 Tip, .043 Nit 50 Amp
- T-250 Tip, AR/H 150 Amp
- T-251 Tip, AR/H 100 Amp
- T-252 Tip, AR/H 50 Amp



- ITEMS NOT SHOWN**
- T-265 Tip Wrench
  - T-266 Electrode Wrench
  - T-163 Lubricant



Gas Requirements	Gas	Pressure	Hot Flow
Plasma	Compressed Air	50 psi (3.4 BAR, 340 kPa)	For Cutting: 22 - 28 scfh (10.4 - 13.2 lpm) For Gouging: 22 - 43 scfh (10.4 - 20.3 lpm)
	Oxygen	50 psi (3.4 BAR, 340 kPa)	
	Argon/Hydrogen Nitrogen	50 psi (3.4 BAR, 340 kPa)	
Secondary	Compressed Air Nitrogen Carbon Dioxide	50 psi (3.4 BAR, 340 kPa)	For Cutting or Gouging: 220scfh (103 lpm)
	Water	Min. 50 psi (3.4 BAR, 340 kPa)	8 gph (30.3 lpm)